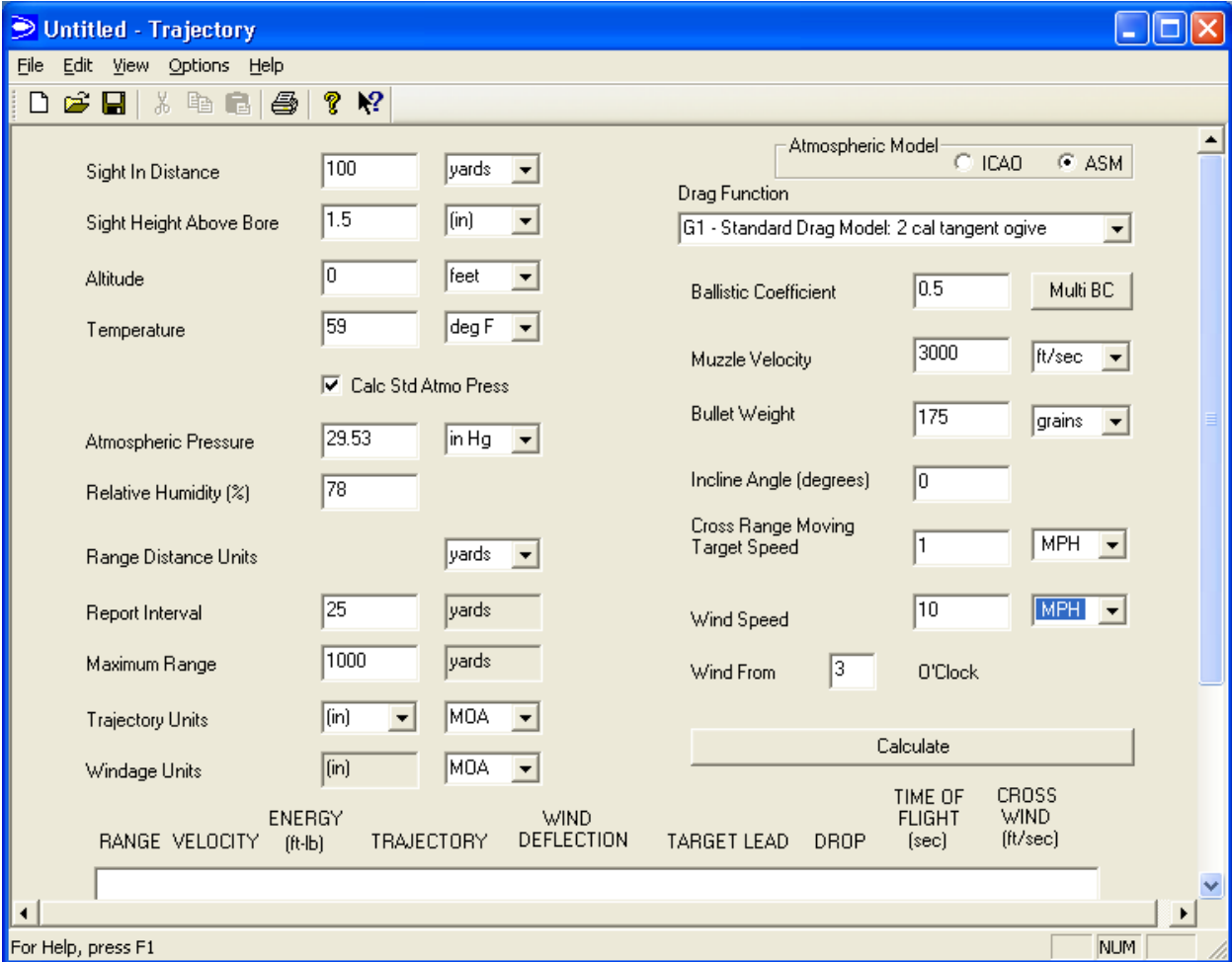


**Gmodels**  
**Ballistic Analyzer**  
**[www.Perry-Systems.com](http://www.Perry-Systems.com)**

Introducing Gmodels a Ballistic Analyzer for the studious shooter. It will appeal to the engineer in all of us. The development of Gmodels began several years ago to enable Perry-Systems to explore ballistic applications. It has been upgraded over the years as new technology has been introduced. Here are the main features of Gmodels.

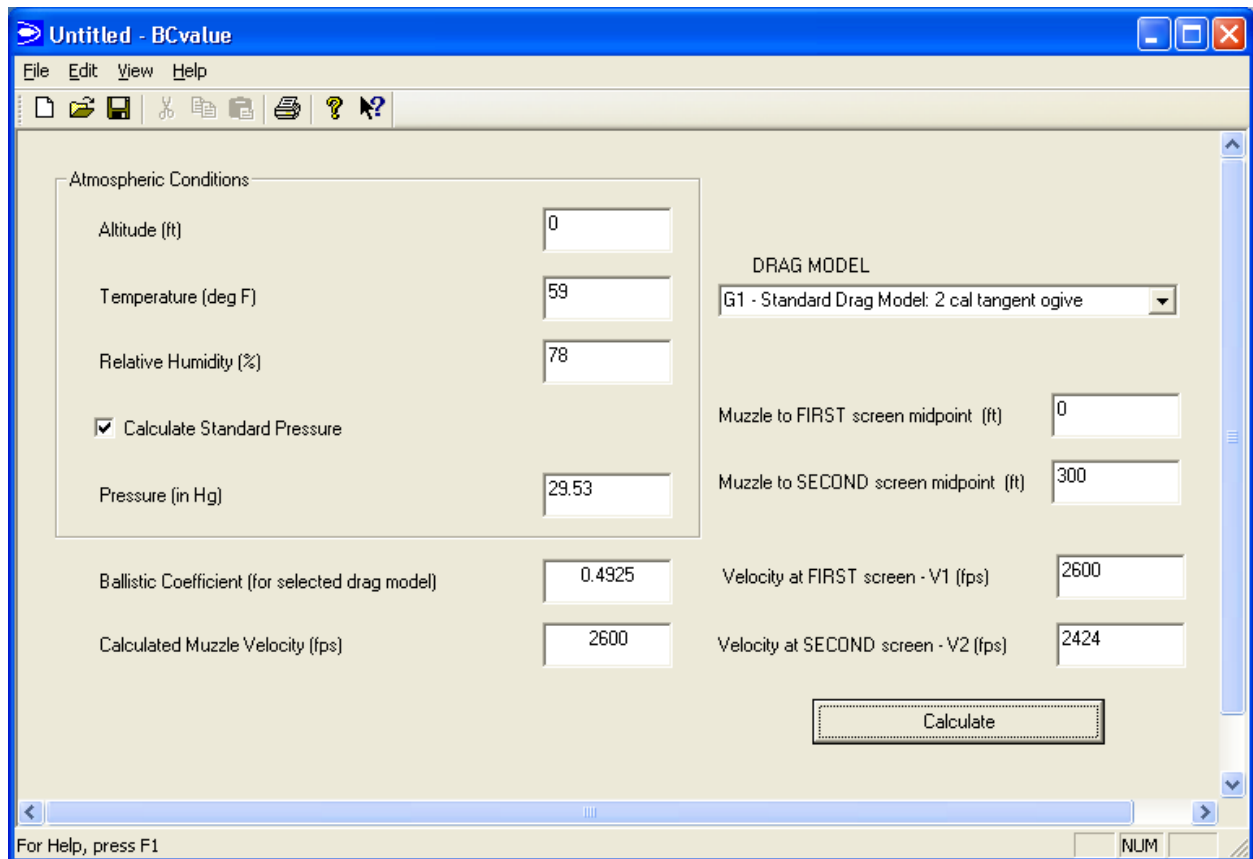
- 1) A very flexible interface for the user to select units for temperature, pressure, distance, etc from pull down lists.
- 2) The ability to choose aerodynamic drag models G1, G2, G3, G4, G5, G6, G7, GL, and GS. G1 is by far the most common model used today. However the use of the G7 model for VLD bullets is now popular with long range shooters. (After all this is what these bullets are for).
- 3) Either of the ICAO or the ASM atmospheric models can be selected.
- 4) Multiple ballistic coefficients (velocity zones) can be used.
- 5) Gmodels consists of two primary components, a Trajectory calculator, and a BC value calculator.
- 6) The Trajectory Calculator will generate a trajectory report on the main screen in a scroll down window. (see screen shot on page 2) It also has the following options.
  - a) Output the Trajectory report to a tab delimited text file which can be imported into Excel for enhancement and additional analysis.
  - b) Point blank range analysis.
  - c) Enter multiple wind profile values.
  - d) Estimation of spin drift.
  - e) Snapshot view of atmospheric parameters (air density and sound speed).

Gmodels Trajectory Calculator – Main Screen



The BC value calculator will calculate a BC value based on the velocity near the muzzle and a down range velocity value. Any of the G models can be selected and the appropriate BC value will be calculated. This is also very useful for obtaining a BC value for vendor data that show a velocity profile vs range but does not show a BC value.

You will be absolutely amazed at how useful this tool is.



Launch Date: August 10, 2009.